

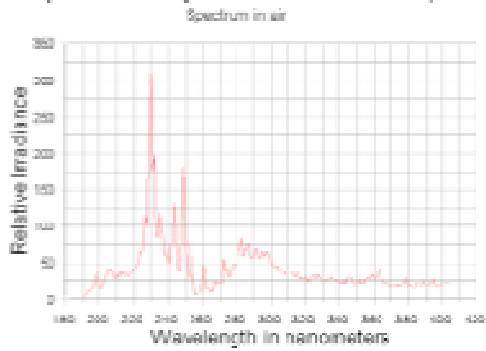
Model Nos:	Description:
XeCQ-LF XeCQ-LFHP	<p>Flash lamp System with Ellipsoidal Reflector</p> <p>This product data sheet describes a Xenon bulb type flash lamp with an integrated high voltage power supply and ellipsoidal mirror with provision for a vacuum flange. The system will produce a minimum of 0.5 watts total optical power from 160 to 4000 NM with a minimum of 0.2 watts from 160 to 400 NM. It is an easy-to-use source of irradiance greater than a conventional 50 watt D2 lamp. The adjustable ellipsoidal mirror facilitates interfacing to a vacuum chamber by enabling the focused spot of the plasma to be adjusted from a few cm to more than 100 cm. available. The -LF model operates up to 15 W input power and the -LFHP model up to 100 W input power (at 70 to 260 V 50/60 hz).</p>

Features	Electrical Characteristics	Optical and Mechanical Characteristics
<ul style="list-style-type: none"> • Xe/Suprasil replaceable lamp • Unit complete with all power supplies required for operation • Lamp optical conversion efficiency as great as 15% • 15 watt high voltage power supply integrated into shielded housing • Ellipsoidal mirror with adjustable focus • Operation from 28 V/1 A power supply • Colour temperature > 14000 Kelvin • Adapters to Conflat® vacuum flanges and UV fiber-optic cable 	<ul style="list-style-type: none"> • 40 watt Suprasil envelope lamp bulb • -LF High voltage supply - 400 V output; -LFHP -1000 V • Maximum input of 28 V • Pulse width < 2 microseconds • Pulse jitter typically less than 200ns • Output peak to peak amplitude jitter typically 5% • Internal oscillator provides repetition rate of 0 to 100Hz • Switch selectable external trigger • High Power model: power supply 1000 V output high speed air cooling 	<ul style="list-style-type: none"> • Lamp electrode spacing of 0.1cm • Ellipsoid mirror aperture of 1 cm • Distance between foci of 1.6 cm • Spot diameter minimum of 0.2 cm and a maximum of 6.0 cm • Adjustable spot distance of 3 cm to 100 cm

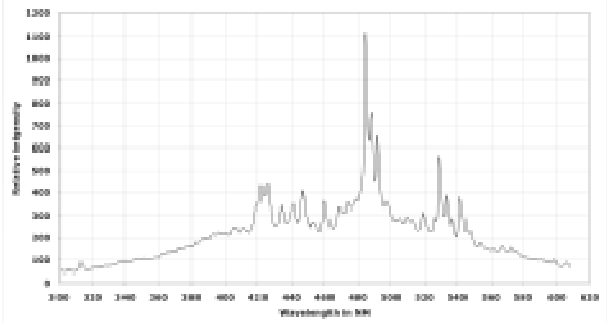
Modulation	Internal oscillator or TTL(5 V logic) input			
Electrical:	min	Typ.	max	
Input Power -LF	5	25	30	Watts
Input Power -LFHP				
Input voltage both models	70	115	260	VAC
Input Line Frequency both models	50	60	65	Hz
Mounting flange both models	Optional 4.5 in or 6 in CF style mounting flange			
Cooling both models	Forced air cooling			
System both models	System includes power supply, EMI shielded enclosure, Vacuum flange, Power supply, and calibration			

Spectral Output:

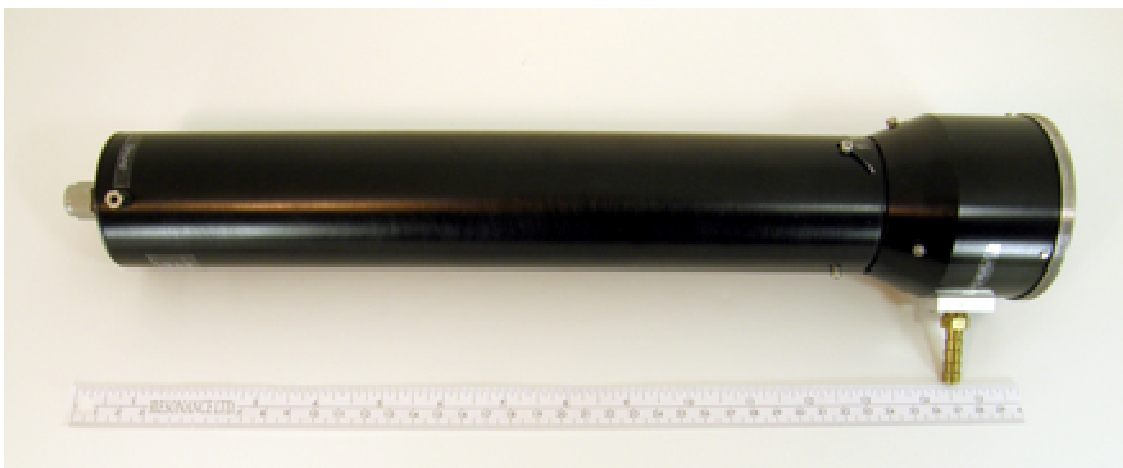
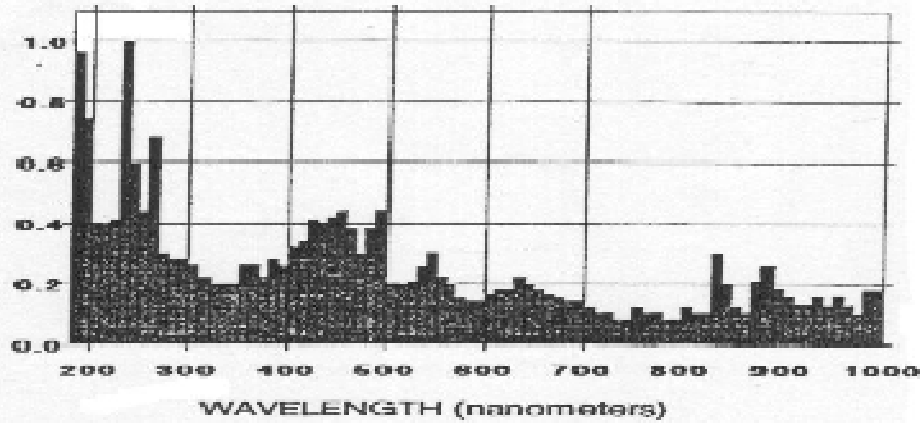
Spectral Output of Xe Flash Lamp



Flash Lamp XeOH-UF spectrum with UV/Vis Spectrometer



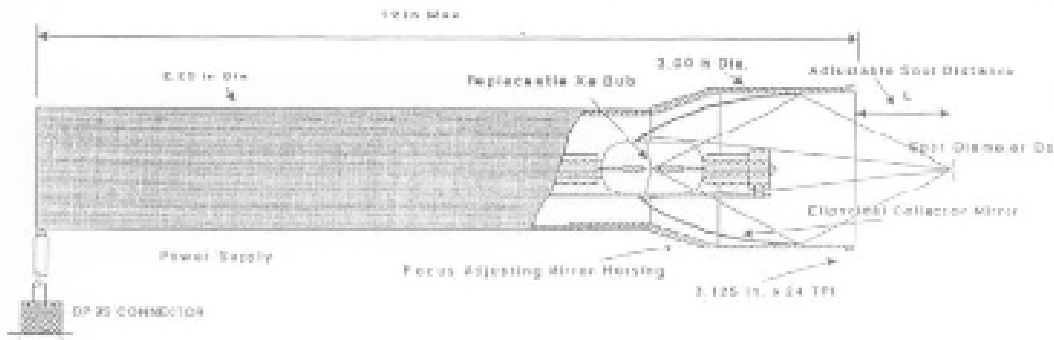
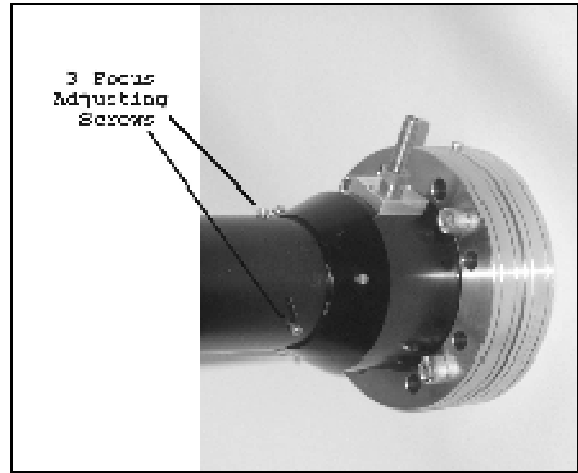
RELATIVE SPECTRAL OUTPUT



-LF system with water filter and 4.5 in CF flange with quartz window



-LF system showing focus adjustment and locking with 3 SHC screws



-LF system dimensions/picture

-LFHP System with optional window

