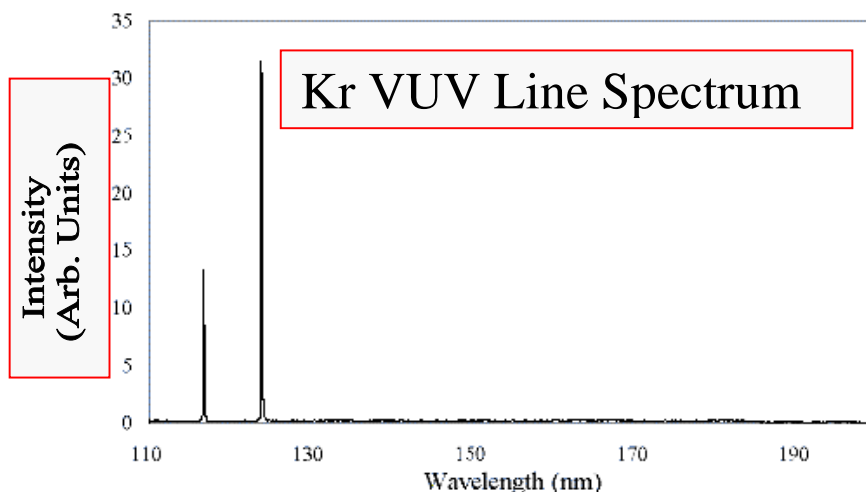


<b>Model No:</b>	<b>Description:</b>
KrLM-L	<p><b>Krypton Vacuum Ultraviolet (VUV) Line Source</b></p> <p>This Krypton filled RF powered lamp system is a reliable and maintenance free high intensity source of deep VUV emissions at <b>116.5 and 123.6 NM</b>. This source mounts to a 2.75 inch CF flange for convenient connection to a HV system. VUV fluxes greater than 3 milliwatts are delivered through the output window for use in vacuum applications such as photoluminescence, photoionization, photolithography and mass spectroscopy.</p>

**Electrical /Optical Specifications/General:**

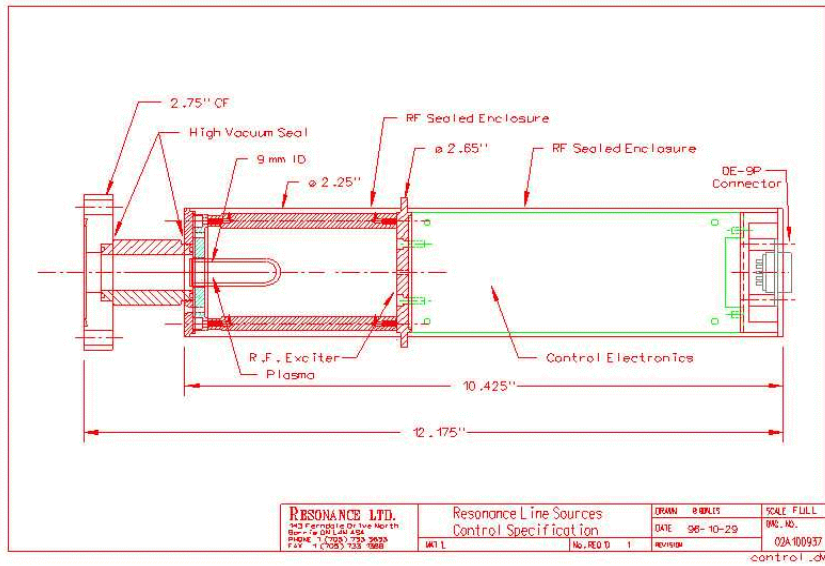
Specification	Minimum	Typical	Maximum	units
<b>Gas Fill</b>		<b>Krypton</b>		<b>na</b>
<b>Peak wavelengths</b>	-	<b>147.0</b>	-	<b>NM</b>
<b>Full Spectral Range</b>	-	<b>129 to 7,000</b>	-	<b>NM</b>
<b>VUV Intensity</b>	$3 \times 10^{15}$	$5 \times 10^{15}$	$8 \times 10^{15}$	<b>Photons/sec/steradian</b>
<b>Full angle output cone</b>	<b>30</b>	<b>45</b>	<b>65</b>	<b>Degrees</b>
<b>Window Material</b>		<b>MgF<sub>2</sub></b>		<b>na</b>
<b>Clear Aperture of window</b>		<b>0.9</b>		<b>CM.</b>
<b>Pulse</b>	<b>Modulation to 1 kHz available as option</b>			
<b>Certification</b>	<b>Calibration of Irradiance in Vacuum</b>			
<b>Plasma diameter</b>	0.8	0.9	1.0	CM.
<b>Plasma length</b>	2	2.5	3.0	CM.
<b>Input Power</b>	20	25	30	Watts
<b>Input voltage</b>	95	115	260	VAC
<b>Input Line Frequency</b>	50	60	65	Hz
<b>Mounting flange</b>	2.75 inch Conflat is standard, lamp can be sealed to 10 <sup>-7</sup> torr system			
<b>Cooling</b>	Air cooling			
<b>Intensity monitor</b>	Intensity monitor available as an option			
<b>Thermal control</b>	na			
<b>System</b>	Complete system includes AC to DC power supply, RF power supply, EMI shielded enclosure, Vacuum flange, case, manual and calibration			

7



**Mechanical Specifications**

CF Flange



Materials/misc. specs.	
Window	Magnesium Fluoride
Body	Aluminum
Mass	<1 kg. incl. pwr. supply
Vacuum Adapter	Stainless Steel
Power Supply	2 x 2.5 x 6 in

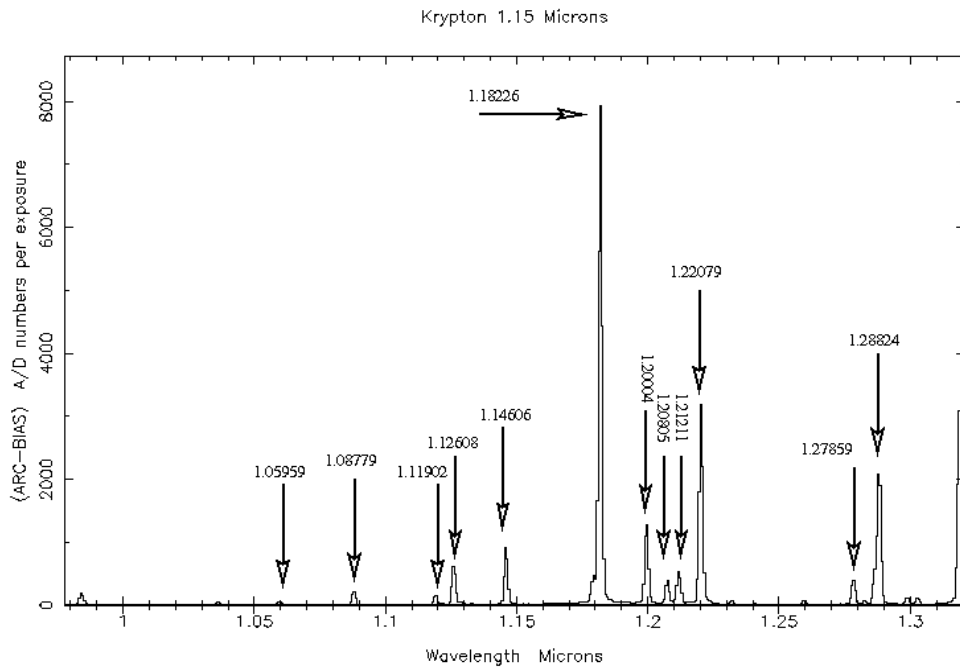
Light source showing magnesium fluoride window (vacuum adapter removed)







Spectrum 990 to 1320 nm



Spectrum 3460 to 414 nm

